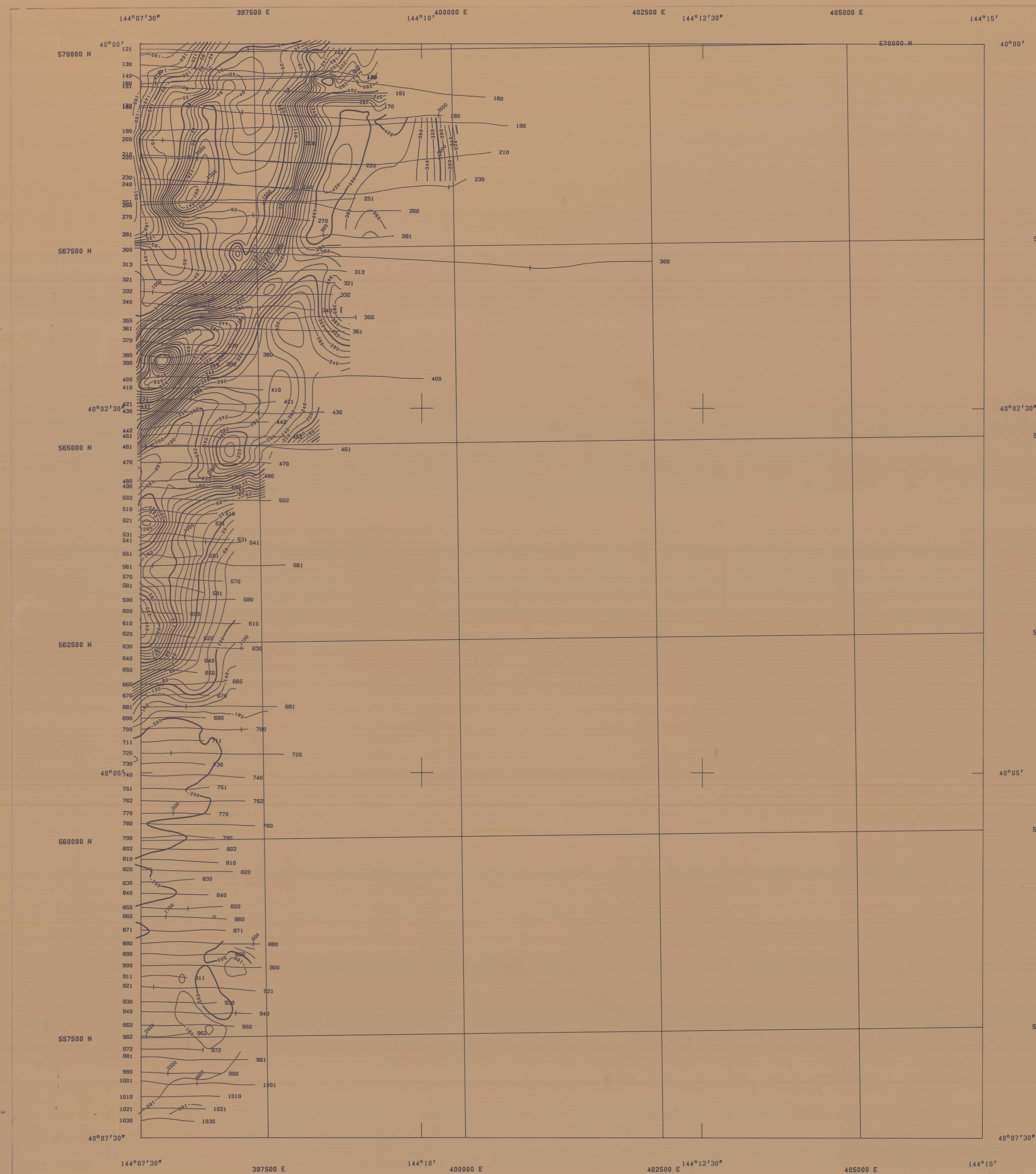


EL. 21/79
FROM MINARET FIELD
GRASSY 7717-IV-NE
5842 S/B

Plan 30

5 cm

27 JUN 1981



KING ISLAND SPECIAL

GRASSY 7717-IV-NE

GEOPEKO



SCALE 1:25 000



7718	7718	7718
111-SW	111-SE	11-SW
7717	7717	7717
IV-NW	IV-NE	1-NW
7717	7717	7717
IV-SW	IV-SE	1-SW

LOCATION INDEX

INTEGRATED SURVEY GRID
ZONE 54J3

GRASSY

AIRBORNE GEOPHYSICAL SURVEY

Total Magnetic Field.

SURVEY PARAMETERS

Nominal flight line separation: 150m with 1.5km tielines

Nominal terrain clearance : 50m onshore; 15m offshore

Nominal data spacing along flight lines: 70m

Navigation and recovery by Motorola Mini-Ranger MRS- 3

Aircraft: Austirex Nomad N 22 B

Contour Interval: 20 nT

International Geomagnetic Reference Field subtracted prior to contouring

Survey Date: August 1980

Survey flying, data acquisition & map preparation by Austirex Aerial Surveys Pty Ltd

Project management by Geopeko geophysical group

DRAWING NO: 5842 S/B